

LAKE PLACID CENTER FOR THE ARTS 2012

National Theatre Live

Best of British theatre broadcast live in cinemas around the world

\$18 / \$16 LPCA MEMBERS / \$12 STUDENTS 18 & UNDER



COLLABORATORS

FRI., JANUARY 20 • 7:30PM

Moscow, 1938. A dangerous place to have a sense of humour; even more so a sense of freedom. Mikhail Bulgakov, living among dissidents, stalked by secret police, has both. And then he's offered a poisoned chalice: a commission to write a play about Stalin to celebrate his 60th birthday. Inspired by historical fact, embark on a surreal journey into the fevered imagination of the writer as he loses himself in a macabre and disturbingly funny relationship with the omnipotent subject of his drama. A new play by John Hodge. (Approx: 3 hours, 15 mins.)

TRAVELLING LIGHT

TUES., FEBRUARY 21 • 7PM (approx: 3 hours)

Nicholas Wright's new play is a funny & fascinating tribute to the Eastern European immigrants who became major players in Hollywood's golden age. In a remote village in Eastern Europe, around 1900, the young Motl Mendl is entranced by the flickering silent images on his father's cinematograph when he stumbles on a revolutionary way of story-telling. Forty years on, Motl - now a famed American film director - looks back on his early life & confronts the cost of fulfilling his dreams.

THE COMEDY OF ERRORS

FRI., MARCH 9 • 7:30PM

Shakespeare's furiously paced comedy will be staged in a contemporary world into which walk three prohibited foreigners who see everything for the first time. Two sets of twins separated at birth collide in the same city without meeting for one crazy day, as multiple mistaken identities lead to confusion on a grand scale. And for no one more so than Antipholus of Syracuse and his servant Dromio who, in search of their brothers, arrive in a land entirely foreign to their distant home. (Approx: 3 hours, 15 mins.)



SHE STOOPS TO CONQUER

SAT., APRIL 28 • 7:30PM (Approx: 3 hours)

One of the great, generous-hearted & ingenious comedies of the English language. Goldsmith's classic offers a celebration of chaos, courtship & the dysfunctional family. A man of substance, looking forward to acquainting his daughter with his old pal's son is mistaken for an innkeeper, his daughter for the local barmaid. The good news is, while the young lad can barely speak to a woman of quality he's a charmer with those of a different stamp. Misdemeanours multiply, love blossoms, and mayhem ensues.



WITH OPENER SHADY ALLEY

FRIDAY, FEBRUARY 10[♀]
7:30PM

TICKETS: \$15 ADULTS /
\$13 SENIORS & STUDENTS



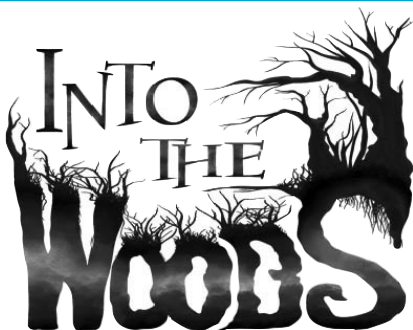
BEATLES TRIBUTE BAND

With performances that cover nearly every phase of the Fab Four's epic catalog, this tribute band from Burlington aims to replicate The Beatles' music with taste, stunning precision, and infectious enthusiasm. Members are all established veterans of Burlington's eclectic music scene.

Community Theatre Players present...

DIRECTED BY SUNNY ROZAKIS

Music & Lyrics by Stephen Sondheim
Book by James Lapine



MAY 18[♀], 19, 25, 26 • 8PM MAY 27 • 2PM

When a Baker and his wife learn they've been cursed with childlessness by the Witch next door, they embark on a quest for the special objects required to break the spell, even if it means swindling, lying to and stealing from Cinderella, Little Red Riding Hood, Rapunzel and Jack (who climbed the beanstalk). Everyone's wish is granted at the end of Act One but the consequences of their actions return to haunt them later, with disastrous results.

TICKETS: \$16 ADULTS / \$14 SENIORS & STUDENTS
MATINEE: \$14 ADULTS / \$12 SENIORS & STUDENTS

IT'S MARDI GRAS NIGHT AT THE LPCA TERRANCE SIMIEN & THE ZYDECO EXPERIENCE FRIDAY, FEBRUARY 3[♀] • 7:30PM

For more than 2 decades Grammy award winning artist Terrance Simien, 8th generation Louisiana Creole, has been shattering the myths about what his indigenous Creole Zydeco music is and is not. Leading his Zydeco Experience Band, Simien has become one of the most respected and internationally recognized touring and recording artists in roots music today. He has performed over 5000 concerts, toured millions of miles to over 40 countries and reached at least a million people during his eventful 25 year career.

Incorporating diverse music styles he creates a hypnotic blend of Zydeco-roots-New Orleans funk-reggae-flavored-Afro-Caribbean world music. Simien is blessed with an extraordinary talent that expresses the deepest human emotions through the original instrument: The Voice.

He lends his music talent to the new Disney classic, *The Princess & The Frog*, set in New Orleans & Louisiana.

North Country Public Radio is Media Sponsor for this event.

TICKETS: \$16 / \$18 DAY OF SHOW



THE TARTAN TERRORS



WEDNESDAY, FEBRUARY 29[♀] • 7PM

See why *Celtic Beat Magazine* hails the phenomenon known as the Tartan Terrors "the heirs apparent to the [Celtic] mayhem."

North America's premiere Celtic Event, features the best in music, comedy and dance. Bolstered by the blistering piping of a 2-Time World Champion Bagpiper, the driving tones of drums from around the world, and a guitar played unlike any you've ever heard. Combine this musical prowess with championship calibre Highland Dancers and internationally recognized comedic performers and this Celtic Group goes beyond the ordinary.

TICKETS: \$16



Get in the mood for St. Pat's Day with the LPCA!

THURSDAY, MARCH 15[♀] • 7PM

Ask Bob Dylan, Van Morrison, or Bono about the roots of Irish Music, and they will point you to the McPeake Family!

For generations of folk music enthusiasts the name of the McPeake Family of Belfast has stood for one of the most distinctive sounds in Irish music.

LPCA welcomes to the stage the 4th generation of this world famous musical dynasty. Francis - one of the few authentic uilleann pipers in the world today and his band, McPeake, offer a sound unique in the world of music with its fusion of original Celtic compositions, folk and contemporary pop rhythms and styles.

TICKETS: \$16



almost maine
by John Cariani

"A snowy charmer...These 9 tales of love in the time of frostbite have a winning glow that proves surprisingly contagious."—NY Sun.

FEB. 17[♀], 18, 24, 25 • 7:30PM FEB. 26 • 2PM

PENDRAGON THEATRE PRESENTS THIS WINTRY ROMANTIC COMEDY DIRECTED BY BONNIE B. BREWER

On a cold, clear, moonless night in the middle of winter, all is not quite what it seems in the remote, mythical town of Almost, Maine. As the northern lights hover in the star-filled sky above, Almost's residents find themselves falling in and out of love in unexpected and often hilarious ways. Knees are bruised. Hearts are broken. But the bruises heal, and the hearts mend—almost—in this delightful midwinter night's dream.

Almost, Maine has been praised as: "...a whimsical approach to the joys and perils of romance. Magical happenings bloom beneath the snowdrifts."—NY Times; "a comic, romantic roundelay" -The Wall Street Journal.

TICKETS: \$16 ADULTS / \$14 SENIORS & STUDENTS
MATINEE: \$14 ADULTS / \$12 SENIORS & STUDENTS

Adult Comedy Night with...



Featuring:

PHIL HANLEY, TIM KROMPIER, MARK VIERA

SATURDAY, MARCH 3[♀] • 8PM

No over-hyped celebrities, no super-sized tickets prices, just an amazing night of comedy starring the Nobodies of Comedy! Don't let the name fool you. These young comics have paid their dues. They've worked every major club in the country and have been seen on Late Night shows and Comedy Central. They're not household names (yet), but they're hip, young, & hilarious. Preview these funny men on our site - we laughed, you will too!

TICKETS: \$16 ADVANCE / \$18 DAY OF SHOW

The Nobodies of Comedy: See tomorrow's stars of comedy today!

LPCA and Pendragon Theatre Company Members offer a relaxing evening in the LPCA Annex. Featuring a play reading & desserts!

JUST DESSERTS • GOD OF CARNAGE

SUNDAY, MARCH 18[♀] • 6:30PM • \$15

When Benjamin hits Henry at a nearby park, it starts two sets of parents on a comically explosive downhill slide from political correctness to character assassination. In this universally acclaimed new comedy by the author of Art, adults come together for a civilized evening of coffee, cake & conversation about their kids. Frayed nerves soon surface and the grownups begin to outdo their pugnacious children in bad behavior. Winner of the 2009 Tony Award for Best Play, *God Of Carnage* is a hilariously harrowing look at the minefield of modern marriage.

Elisa Monte Dance

SUNDAY, APRIL 22 • 3PM

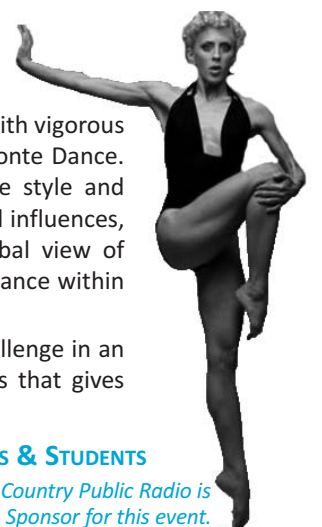
Funded in part by the Frances Murdock Memorial Fund at Adirondack Community Trust

A singular artistic vision combines with vigorous athleticism in the works of Elisa Monte Dance. At once true to its own distinctive style and eager to encompass diverse cultural influences, Monte's choreography takes a global view of movement that puts the world of dance within her audience's grasp.

Her dancers rise to the creative challenge in an ecstatic display of physical prowess that gives life to an intense array of emotions.

TICKETS: \$15 ADULTS / \$12 SENIORS & STUDENTS
\$8 CHILDREN 12 & UNDER

North Country Public Radio is Media Sponsor for this event.



LPCA will be selling wine & beer at certain events they're marked with a wine glass! IDs will be required

RESERVATIONS 518.523.2512 • LAKEPLACIDARTS.ORG • INFO@LAKEPLACIDARTS.ORG

The Metropolitan Opera

Box Lunches Available To Order for Live Shows
(Box Office opens 1hr prior to show, doors to theatre open at 1/2hr)

\$18 / \$16 LPCA MEMBERS / \$12 STUDENTS 18 & UNDER
MINI-SERIES 6-PACKS: \$96 / \$90 MEMBERS / \$60 STUDENTS

SUN., JAN. 8 • HANDEL'S *RODELINDA* (4PM ENCORE)

Sensational in the 2004 Met premiere of Stephen Wadsworth's much-heralded production, Renée Fleming reprises the title role. She's joined by Stephanie Blythe and countertenor Andreas Scholl, and Baroque specialist Harry Bicket conducts. (approx 4hrs, 15min)

SUN., JAN. 22 • *THE ENCHANTED ISLAND* NEW PROD. (4PM ENCORE)

In one extraordinary new work, lovers of Baroque opera have it all: the world's best singers, glorious music of the Baroque masters, and a story drawn from Shakespeare. In *The Enchanted Island*, the lovers from Shakespeare's *A Midsummer Night's Dream* are shipwrecked on his other-worldly island of *The Tempest*. Inspired by the musical pastiches and masques of the 18th century, the work showcases arias and ensembles by Handel, Vivaldi, Rameau, and others, and a new libretto by Jeremy Sams. Eminent conductor William Christie leads an all-star cast. (approx 3hrs, 35 min)

SAT., FEB. 11 • WAGNER'S *GÖTTERDÄMMERUNG* (NOON LIVE)

SPONSORED BY CAROLINE WELSH IN MEMORY OF PETER WELSH.

With its cataclysmic climax, the Met's new Ring cycle, directed by Robert Lepage, comes to its resolution. Deborah Voigt stars as Brünnhilde and Jay Hunter Morris is Siegfried—the star-crossed lovers doomed by fate. Fabio Luisi conducts. (approx 6hrs)

SUN., FEB. 19 • DONIZETTI'S *FAUST* (4PM ENCORE)

With Jonas Kaufmann in the title role, René Pape as the devil, and Marina Poplavskaya as Marguerite, Gounod's classic retelling of the Faust legend couldn't be better served. Tony Award-winning director Des McAnuff updates the story to the first half of the 20th century with a production that won praise in London last season. Yannick Nézet-Séguin conducts on the heels of his Don Carlo success. (approx 4hrs, 10min)

The Neubauer Family Foundation

The Met's Live in HD series is made possible by a generous grant from its founding sponsor, The Neubauer Family Foundation

Bloomberg

Bloomberg is the global corporate sponsor of *The Met: Live in HD*. The HD broadcasts are supported by Toll Brothers, America's luxury home builder.®

HD LIVE

Photo: Anna Netrebko in Manon



SUN., MAR. 11 • VERDI'S *ERNANI* (4PM ENCORE)

Angela Meade takes center stage in Verdi's thrilling early gem. Marcello Giordani is her mismatched lover, and all-star Verdians Dmitri Hvorostovsky and Ferruccio Furlanetto round out the cast. (approx 3hrs, 50min)

SAT., APR. 7 • MASSENET'S *MANON* (1PM LIVE)

SPONSORED BY LEE & NANCY KEET.

Anna Netrebko's dazzling portrayal of the tragic heroine in Laurent Pelly's new production travels to the Met from the Royal Opera House, Covent Garden. Piotr Beczala and Paulo Szot also star, with the Met's Principal Guest Conductor Fabio Luisi on the podium. (approx 4hrs, 5min)

SAT., APRIL 14 • VERDI'S *LA TRAVIATA* (1PM LIVE)

SUN., MAY 6 • VERDI'S *LA TRAVIATA* (4PM ENCORE)

ENCORE SPONSORED BY EVERGREEN CB REAL ESTATE, LLC & ARCMaster LP, INC.

Natalie Dessay will put on the red dress in Willy Decker's stunning production, in her first Violetta at the Met. Matthew Polenzani sings Alfredo, Dmitri Hvorostovsky is Germont, and Principal Guest Conductor Fabio Luisi is on the podium. (approx 3hrs, 5min)

For cast lists & more information visit: www.metoperafamily.org

CHILDREN'S OPERA SPECIAL MET ENCORE PERFORMANCE

The Magic Flute

SUNDAY, JANUARY 15 • 4PM

Enter a magical world of dancing bears, giant birds, and colorful adventure in Mozart's ever-popular masterpiece. This abridged version, sung in English, is perfect for opera fans of all ages. Tony Award winner Julie Taymor (*The Lion King*) directs a youthful cast conducted by Metropolitan Opera Music Director James Levine. This performance was originally presented in Dec. 2006 as the inaugural transmission of the Met's Live in HD series.

\$10 ADULTS / \$7 CHILDREN

LPCA FRIDAY NIGHT FILM SERIES

7:30PM Screenings • \$6 General Admission

JANUARY 13 ♀ • GREASE SING-ALONG!

Dust off your poodle-skirt and saddle shoes and get your vocal cords warmed up and ready to chime in on: "Summer Lovin'," "You're the One that I want," "Hopelessly Devoted," and so many more. Sandy and Danny are still reeling from their summer romance, but when they discover that they are now in the same high school AND that they belong to two different social circles, their love is challenged. Easy-to follow lyrics on screen! (US, 1978, 110mins., PG-13)

JANUARY 27 • BABIES

A visually stunning, joyful new film that simultaneously chronicles the lives of four of the world's newest human inhabitants - in Mongolia, Namibia, San Francisco and Tokyo, respectively -- from first breath to first steps, on a journey at once universal and amazingly original. (France, 2010, 79mins., PG, Dir. Thomas Balmes)

MARCH 2 • MIDNIGHT IN PARIS

This is a romantic comedy set in Paris about a family that goes there because of business, and two young people who are engaged to be married in the fall have experiences there that change their lives. It's about a young man's great love for a city, Paris, and the illusion people have that a life different from theirs would be much better. (US, 2011, 94mins., PG-13, Dir. Woody Allen)

SPECIAL FILM EVENTS ...



The Banff Centre SUNDAY, JANUARY 29 • 7pm

BANFF MOUNTAIN FILM FESTIVAL WORLD TOUR

Ignite your passion for adventure, action and travel! Films in this year's world tour are sure to captivate and amaze the explorer within you. TICKETS: \$18 ADVANCE / \$21 AT DOOR www.chestnutmntnproductions.com

TRI LAKES CHAPTER OF TROUT UNLIMITED

DRAKE MAGAZINE FLY FISHING FILM TOUR

SATURDAY, MARCH 17 • 7pm

Doors open for this Annual Benefit at 6pm. Prizes, Raffle & More!

Tickets & Info Contact: Jones Outfitters

Jonesoutfitters.com / 523-3468

NORTHERN FOREST CANOE TRAIL FILM BENEFIT

FRIDAY, APRIL 27 • 6:30pm

A fun evening of Paddle Sport Films, Door Prizes & Silent Auction!

Tickets & Info Contact: Adirondack Lakes and Trails Outfitters AdirondackOutfitters.com / 891-7450 / 1-800-491-0414

ADDITIONAL WINTER EVENTS!



SAT., JANUARY 28 • 4PM

Program featuring Finnish composer Janne Ikonen's Western Hemisphere premiere of *Concerto for Saxophone and Wind Ensemble*, Daniel Gordon, soloist. Ikonen will be present to introduce each work and the ensemble, which will be directed by Finnish guest-conductor Nikke Isomottonen.

\$10 (STUDENTS FREE)

THE ROTTEN APPLE

An Original Musical

Written & Directed by Joan O'Leary

Featuring a hysterical & versatile cast of characters brought to life by local kids! With choreography by Christina Stanton.

Sat., Feb 4 • 7pm

Sun., Feb 5 • 3pm

SMALL FARM RISING Thurs., March 1 • 5pm

Green Goddess Foods, Adk Harvest & Northern Lights School host this benefit featuring a food tasting & documentary filmed locally at three unique farms as they carry plants, animals and soils through a growing season. **\$18 Adults / \$12 ages 5-12 / Under 5 free.**

LAKE PLACID SCHOOL OF BALLET

Michela Boschetto, Artistic Dir. • Terpsie Toon, Managing Dir.

Instruction For Ages 3.5 to Adult in Ballet & Jazz

LPCA WINTER OFFERINGS ALSO INCLUDE:

WEIBRECHT FOR SCHOOLS ONLY SERIES, Free AFTERSCHOOL ARTS WORKSHOPS, ADULT ART WORKSHOPS & MORE! Rosters are available mid-late January at the LPCA Office or online.

LPCA BOX OFFICE HOURS:

Box Office typically opens 1 hour before curtain with additional hours during film & performance programs

January 3 - May 5: Tues. - Fri. 1-5pm

Starting May 6: Tues.-Sat. 1-5pm

HOUSE POLICIES: Reservations are accepted over the phone with payment by MasterCard or Visa credit/debit card. There are no cash refunds. The LPCA will exchange tickets for another show in the same season for a \$3/ticket handling charge up until 36 hours before curtain. Cash and personal checks made out to LPCA accepted. Senior Citizen discount - 62 years. Group rates - 20 or more. Toddlers up to 24 months do not need tickets if seated on your lap. \$25 charge on returned checks. Wheel chair seating can be reserved. Personal hearing assistance system available in theater. Theater is air-conditioned. No cameras, recording or video equipment permitted in the theater. Cell phones must be silenced.

LPCA reserves the right to add folding chairs at the front of the theatre for all programs



www.LakePlacidArts.org

ALL PROGRAMS ARE SUBJECT TO CHANGE.

NYSCA

Lake Placid Center for the Arts

Phone: 518.523.2512

Fax: 518.523.2521

www.LakePlacidArts.org

info@LakePlacidArts.org

FINE ARTS GALLERY FREE ADMISSION



SOCIAL FACEWORKING

The spirit of online social networking in a traditional gallery space. Featuring the work of 19 artists with the common thread of portraits created by Nip Rogers.

JANUARY 13 TO FEBRUARY 11

TUES. - THURS. 1-5PM & FRI. 1-9PM

Reception: Friday, January 13 • 5-7pm

NORTH COUNTRY HIGH SCHOOL JURIED ART SHOW

A Showcase of Regional Students

FEBRUARY 17 TO MARCH 9

TUES. - THURS. 1-5PM & FRI. 1-9PM

Reception & Awards: Friday, February 17 • 4-6pm

Sponsored in part by Nancie Battaglia Photography.

ACNA COVER ART JURIED SHOW

A Showcase of Regional Artists

MARCH 16 TO APRIL 14 • TUES. - FRI. 1-5PM

Reception & Awards: Friday, March 16 • 5-7pm

NCCC EXHIBIT

Student works from North Country Community College

APRIL 20 TO MAY 6 • TUES. - FRI. 1-5PM

Reception: May 11 • 4-6pm

ELEMENTARY SCHOOL SHOW

A Showcase of Regional Students

MAY 11 TO MAY 27 • TUES. - SAT. 1-5PM

Opening Reception: May 11 • 4-6pm

ARTISTS FOR ANIMALS

JUNE 1 TO JUNE 9 • TUES. - SAT. 1-5PM

Reception: Fri., June 1 • 5-7pm

Reason2Smile Arts Night

Fri. March 23 • 6:30pm

A benefit for orphaned and at-risk children at Jambo Jipya School in Mtwapa, Kenya. Featuring performances by local African music & dance groups. Keela Dates will share music and pictures from Jambo Jipya School. Goods from Kenya will also be for sale. All proceeds benefit Reason2Smile Inc and Jambo Jipya School. **\$8 Adults / \$5 ages 12 & under**



LAKE PLACID CENTER for the ARTS

17 Algonquin Drive, Lake Placid, NY 12946

WINTER 2012 ARTS

Return Service Requested

Celebrating 39 Years of Arts in the Adirondacks

Non-Profit
U.S. Postage
PAID
Permit No. 35
Lake Placid, NY