

ONSTAGE INCLUDES

DAILY DANCE TECHNIQUE
taught by dancers of RKB

Ballet, Pointe
Modern, and
Specialty Classes
including:
Partnering, Stretch
Theatrics, Jazz
and Conditioning.

DAILY REHEARSAL in
choreography created
for students.

STUDENT PERFORMANCE
concludes the residency.

Open Rehearsals, Meet the Company, Education Programs, and
REBECCA KELLY BALLET'S PUBLIC PERFORMANCE!

REGISTRATION

SPACE LIMITED—RESERVE YOUR PLACE EARLY.

Please keep Onstage information. Return payment portion form only, with payment. Major credit cards, or check payable to Rebecca Kelly Ballet. Tel. 212-431-8489 through June 10; then, 518-293-7608. An information package will be mailed after registration is complete. *Some financial aid is available. Call for information.*

TICKETS TO PERFORMANCES

RKB's lively, educational **Lecture Demonstration, Wed. 7/22, 10:30am.** Different every year. Admission FREE.

RKB's public performance on **Thurs, July 30, 8pm.** One complimentary student and one complimentary adult ticket is included in Onstage or Intern tuition.

Tickets to RKB's performance must be reserved and are available at the LPCA Box Office, 518-523-2512.



ONSTAGE Repertory Performance Fri, 7/31, 10:30am.

Two complimentary tickets are included with OnStage enrollment. Open seating. First come—First served.

Additional OnStage tickets are \$10 at the door. Children under 8 years are FREE. Suitable for ages 2yrs –102yrs.



Making A Dance / Making A Dancer - When RKB is in your area, ask about the 45-minute lively lecture demonstration in which Kelly and her dancers take you "behind the scenes."

Dance Master Classes, 5-day Workshop Intensives, or visiting artist monthly series taught in your community by members of the Company throughout the year. Easy to arrange!

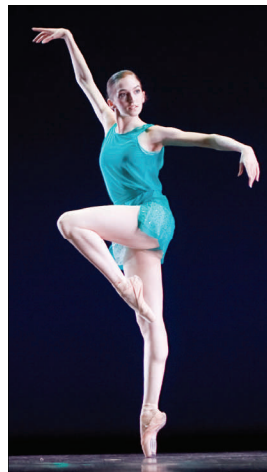
LPCA OFFICE AND BOX OFFICE 518-523-2512.
17 Algonquin Drive and Saranac Avenue.

HOUSING www.lakeplacid.com/flash/wheretostay/z-wheretostay.htm.

THANK YOU! RKB's upstate programs have been made possible in part with support from the Lake Placid Center for the Arts, the Lake Placid Education Fund, and Stewart's Shops.

REBECCA KELLY BALLET

offers simply *the best* blend of modern and contemporary ballet. Seen on PBS MountainLakes, Art Express, heard on NCPR, and featured in a profile in *Pointe Magazine*, Kelly reveals provocative and compelling images, using a directness of expression which easily captivates the audience. RKB has provided dance programs to Lake Placid, and the surrounding region (Jay, Saranac Lake, Tupper Lake, Ticonderoga, North Creek, Potsdam, Watertown, Plattsburgh and Essex) for over 20 years, developing with each community, tailored quality programs that nurture appreciation for the beauty of dance, and provide a hands on experience, thoroughly engaging audiences and participants at every age.



At ease in classical as well as contemporary styles
The New York Times

Ballets that explode into luscious weddings of music and movement
BackStage

"The dancing is direct and pleasurable"
Dance Magazine

RKBallet@ix.ne-tcom.com
RebeccaKellyBallet.org

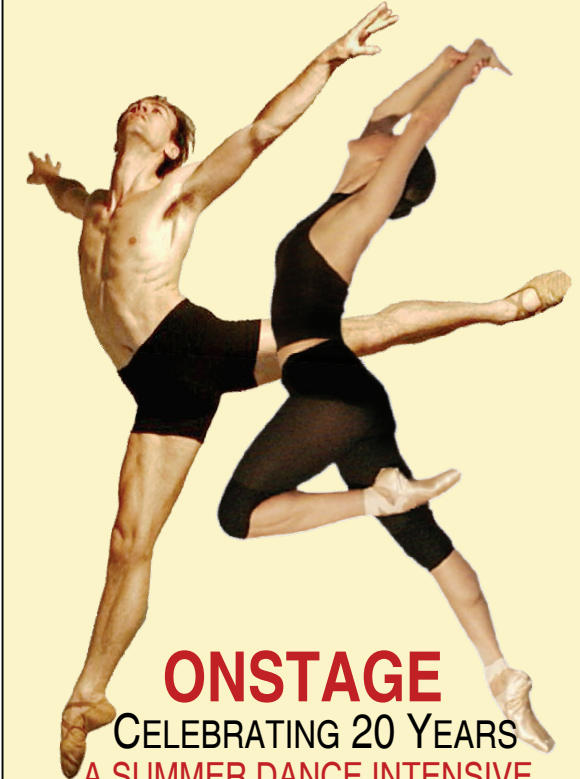
Rebecca Kelly Ballet
579 Broadway, 4B
New York, New York 10012
212-431-8489; Cell: 646-734-7151

(summer) Rebecca Kelly Ballet
2876 Silver Lake Road
Saranac, NY 12981
518-293-7608

BALLET

Rebecca Kelly

New York City and The Adirondacks



ONSTAGE CELEBRATING 20 YEARS A SUMMER DANCE INTENSIVE

JULY 20-31, 2009

AT THE
LAKE PLACID CENTER FOR THE ARTS
LAKE PLACID, NEW YORK

TAKE 10% OFF WHEN YOU REGISTER BY MAY 1!



Parent's Name:

Street:

Town, State, Zip:

Please Provide E-mail:

Tel:

INTERN PROGRAM, Full day _____ 2 wks \$600 (Full day: RKB performance opener, Thurs, 7/30/, 8pm; OS performance Fri, 7/31/, 2+ classes /day
 ONSTAGE PLUS, Half & 2 Full days _____ 2 wks \$400 (1/2 days + 2 full days: RKB performance opener, Thurs, 7/30, 8pm; OS performance Fri, 7/31
 ONSTAGE BASICS, Half day _____ 2 wks \$275 (1/2 days: RKB performance opener, Thurs, 7/30, 8pm; OnStage performance Fri, 7/31

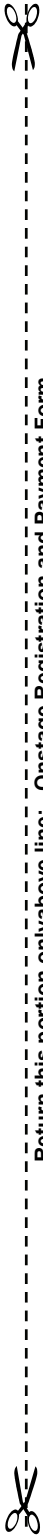
KIDS CO-MOTION III Mo, Tu, Th, Fri* _____ 6 60-minute classes (Child is dropped off; Plus Onstage performance 7/31* at 10:30am) \$140.
 KIDS CO-MOTION II Mo, Tu, Th _____ 6 45-minute classes (Child is dropped off; Open Studio with parents attending at last class) \$100.
 KIDS CO-MOTION I Mo, Tu, Th _____ 6 45-minute classes \$65; _____ 3 classes \$45 (parent and child); _____ Single class drop-ins \$20.

Student Name _____ Birth Date _____ Age Now _____ OnStage (# yrs) _____ Dance Experience _____

1)
2)

REGISTRATION: Check or Credit Card total payment \$ _____ Enclosed. TAKE 10% off price if registration is postmarked by May 1!
 REBECCA KELLY BALLET, 579 Broadway 4B, New York, NY 10012. After June 9, mail to 2876 Silver Lake Rd, Saranac NY, 12981.

I am using _____ AMEX _____ MasterCard _____ VISA _____ / _____ Card EXP. Date _____ CREDIT CARD NUMBER _____



Return this portion onlyabove line: Onstage Registration and Payment Form

REBECCA KELLY BALLET'S ONSTAGE in Lake Placid

Athletic
 Modern Dance
 Challenging
 Classical ballet
 Daring
 Fun!
 Adventurous



ONSTAGE in the Adirondack Mountains since 1990. Discover the world of contemporary dance, learn from RKB's inspiring professionals, perform on stage! This lively 2-week half-day or full-day camp program challenges and encourages the beginner through advanced dance student. In an intensive program of daily training

and rehearsal, students learn dances specially created for them by Rebecca Kelly Ballet which culminate in the Friday Onstage Repertory Performance. Activities take place at the beautiful Lake Placid Center for the Arts.

DANCE TRAINING AND PERFORMANCE ignite the imagination, provide a physical outlet, and encourage students to develop skills in a climate of friendship, good will, and humor. RKB expands cultural horizons with its emphasis on introducing the vivid music of different cultures. Onstage students develop skills of coordination and grace, discipline, cooperation, and focus, — good for school, good for life.

While in residence RKB develops vibrant new ballets, holds dance classes, open rehearsals, a family-oriented lecture demonstration, and a public performance.

Photographs: Todd Bissonette, Adrian Buckmaster, Appleby

THE PROGRAM JULY 20-31, 2009 PURE FUN TO PRE-PROFESSIONAL

ONSTAGE - The INTERN PROGRAM, 13-20 years. Students over 13 years with a serious interest in dance (modern or ballet), who have had a minimum of 3 years of dance training, or age 14 and 5 past Onstage experiences, are eligible for the intensive program, 9am to 3:30pm. Activities include the daily ONSTAGE morning regimen, plus afternoons spent in choreography tailored by Rebecca Kelly, ballet technique, stretch, and pointe, modern or specialty classes, stage craft, and opportunities to observe rehearsals, and a concluding performance.

ONSTAGE PLUS 12-14 yrs. Thinking about being an Intern? Try Onstage Plus! In addition to the morning Onstage schedule, Plus students join the interns for one ballet class each week and 2 long days, participating in a specialty class and observing RKB Company rehearsal in the afternoon. RKB recommends 2 years at OS Plus level before acceptance to the Intern program.

ONSTAGE BASICS 6-14 yrs Participate in 2 weeks, half-days of dance activities, including two performances. Explore movement, develop dance technique while learning choreography, 9am-12noon daily (except as noted). Students are divided into groups according to the artistic director's discretion. Note: Youngest students must have completed Kindergarten by June 2009.

ALL ONSTAGE STUDENTS attend the Fri, July 22 Young & Fun lively presentation by Rebecca Kelly Ballet; and PERFORM in the large group choreography opening RKB's public program Thurs, July 30, 8pm and the closing Onstage presentation Friday, July 31, 10:30am.

KIDS CO-MOTION™, 3 LEVELS, 18mo-3.5yrs; 3.5-4.5; 4.5-6yrs, directed by Craig Brashear. Creative movement classes involve the youngest members of the community with parents in Level I; without parents in Levels 2 and 3. KCM builds movement vocabulary through choreography and song, featuring a range of international music from classical, folk, to rock 'n roll. Dads and Grand-parents are most welcome! KCM III students perform with their instructor in the Friday am OnStage Performance.

